

Aspire Mind the Gap

Discharge Survey

Prior to Discharge surveys were conducted with patients in conjunction with Spinal Cord Injury Centres. This data was anonymized and sent to Aspire as a part of the NHS England Mind the Gap monitoring program. Confidence and knowledge levels for following areas are monitored:

- Skin

Bladder

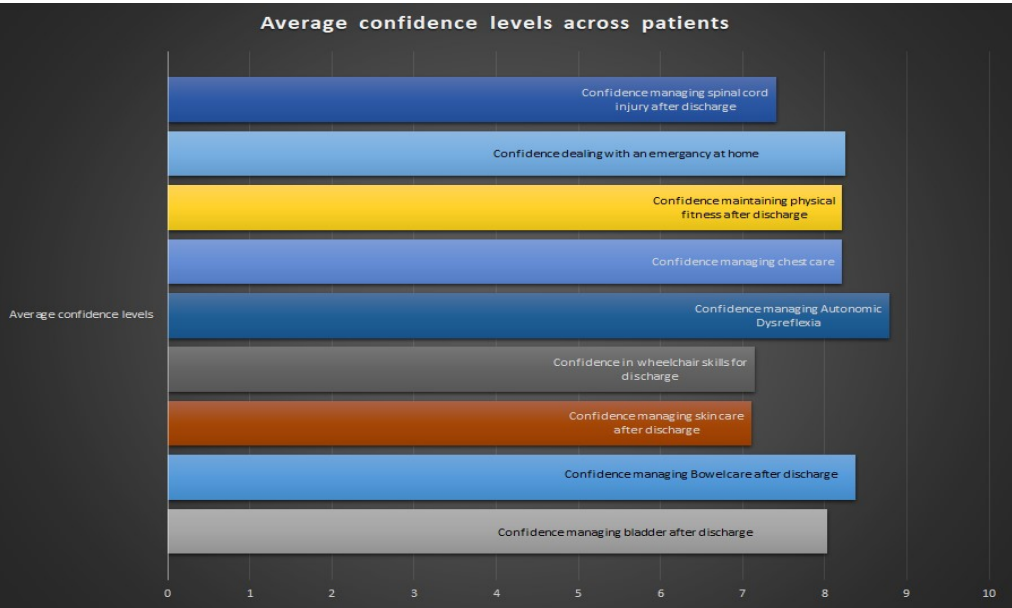
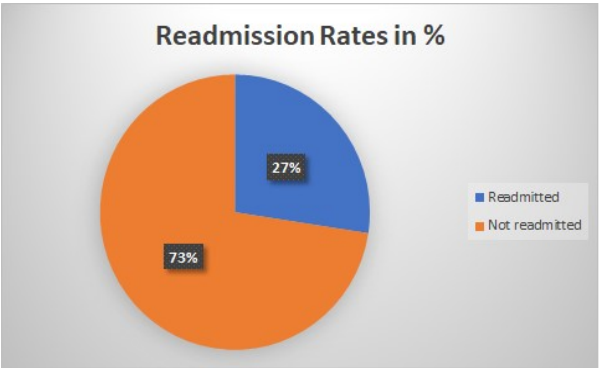
Bowels

Chest Care
- Autonomic Dysreflexia

Physical Fitness

Managing Emergencies

Managing Spinal Cord Injury

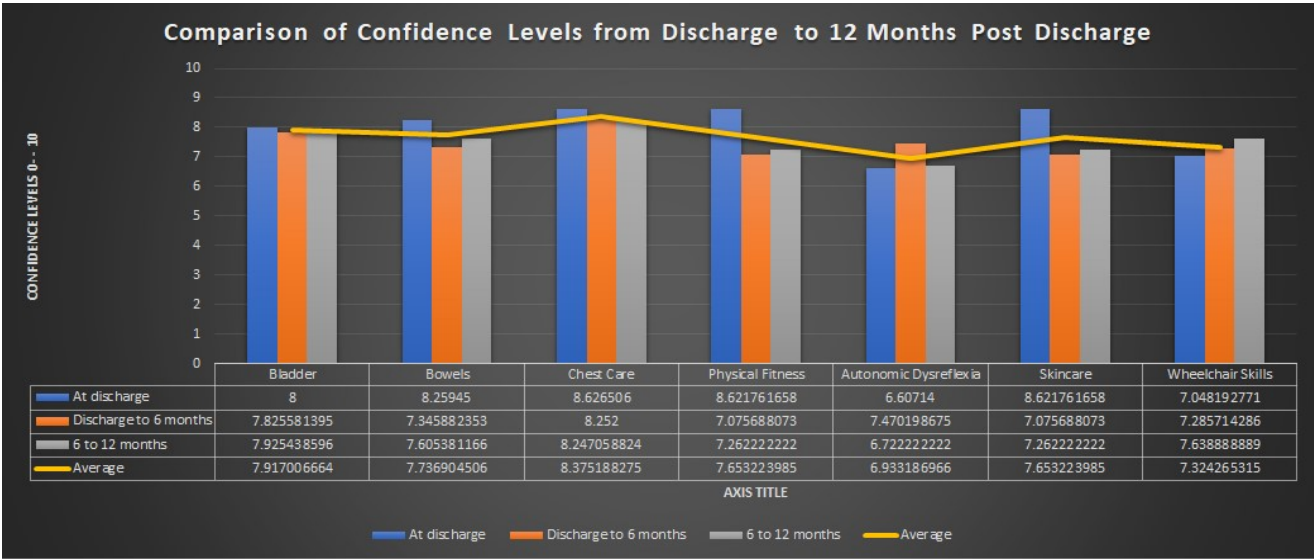
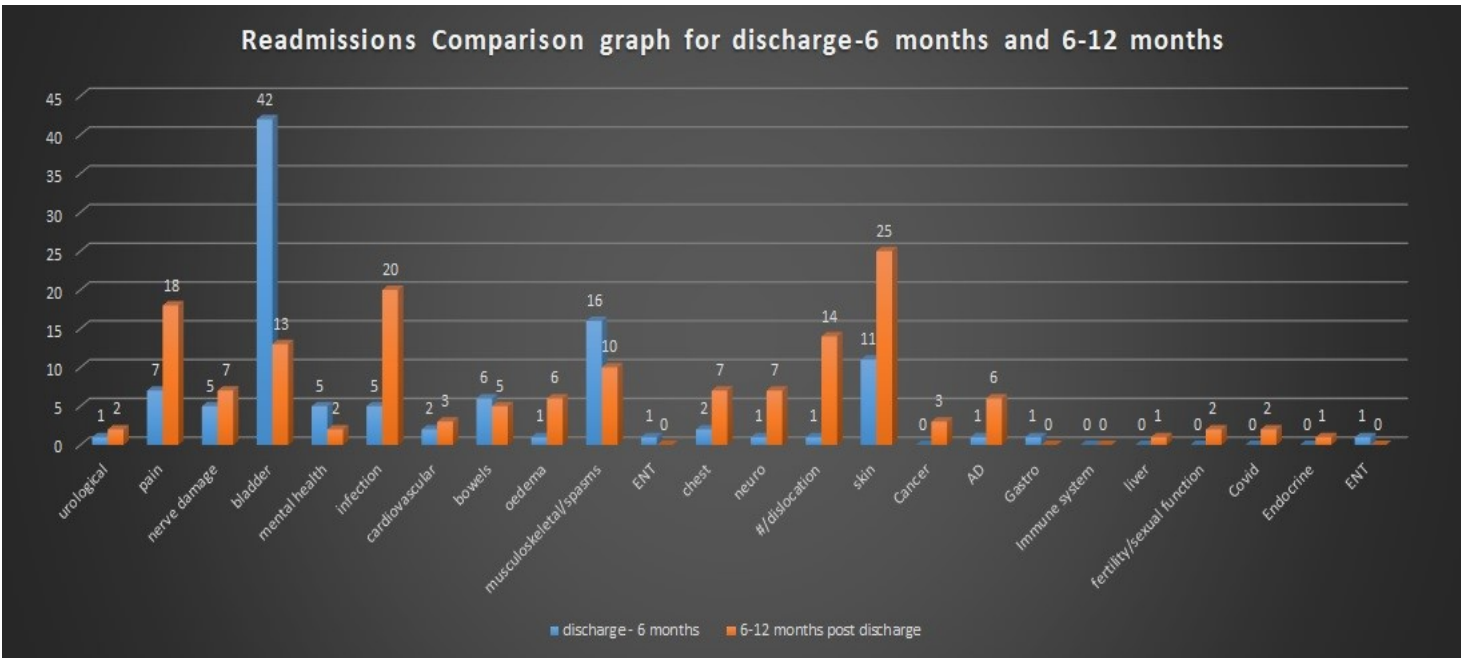


6-Months Post Discharge

Our Services Officer contacts users of Aspire services who have given their permission to be contacted. She arranges to conduct a survey with the service users 6 months post discharge. Readmissions are monitored, including where and why patients were readmitted and how this was managed.

12-Months Post Discharge

Follow up calls take place 12 months post discharge, 6 months after the initial call with the services provider. Confidence levels are captured, along with knowledge levels in line with the pre-discharge surveys. Reasons for readmission were collected and compared across the discharge to 6 months, and 6 to 12 month periods.



Comparison of Discharge, 6- and 12-Month Responses

The three surveys were analysed and comparison graphs created for data points measured continuously across all three surveys. This provides a snapshot for patients struggles and growth during the first two years post rehab.

Supporting people with spinal injury

Aspire